



BAINBRIDGE ISLAND
MUSEUM OF ART

ART & CRAFT OF THE
PUGET SOUND REGION



LINDA WOLF, *Amande*, 1973, giclee from film

Summer Exhibitions | June 24 through Oct 1, 2017

Public Opening | Saturday, June 24, 2-5pm | Free Admission | Meet the Artists

Women in Photography

A group exhibition of personal visions and stories shared through diverse photographic processes. Techniques include traditional darkroom photography, pinhole camera, conceptual filmmaking, interactive installations, as well as experimental and evolving artworks. Artists include: Megumi Arai Ashley Armitage | Marsha Burns | C. Davida Ingram | Marilyn Montufar Janet Neuhauser | Mary Randlett | Meghann Riepenhoff Heather Boose Weiss | Linda Wolf

Ulrich Pakker: Visions Rendered

This major solo exhibition stems from Pakker's adventurous life and artistic pursuits, leading to an amazing body of fabricated metal sculpture. Included are functional and abstract works ranging in scale, along with maquettes from public art projects – both realized and envisioned.

Pierr Morgan: The Children's Garden

This exhibition contains the original paintings from Morgan's latest book, *The Children's Garden: Growing Food in the City*. Join the fun in this team adventure through a hands-on art project – add your own special touch to our garden mural.

Lisa Stirrett: Beneath the Surface

Held over from spring by popular demand – immerse yourself in Stirrett's undersea world of glass, and travel through her story of personal change and growth.

Richard Stine: An Illustrated Life

Celebrate Stine's illustrious, pointed and humorous career as an editorial cartoonist and artist.

Bill Hemp: Bainbridge Island A-Z

Plein air artist Bill Hemp invites you to tour his home of Bainbridge Island through the original pen and ink drawings that comprise his recent book, including his descriptions of many of his favorite places on Bainbridge Island. Books are for sale in the BIMA Store.

Artist's Books: Pop! Goes the Book Art!

Collection of Cynthia Sears

FAMILY ART DAY

AN EXTRAVAGANZA OF HANDS-ON
ART ACTIVITIES, LIVE PERFORMANCES,
AND FUN FOR THE WHOLE FAMILY!

SATURDAY, JULY 8, 10AM-2PM



Photo: Keith Brofsky

BIMA BISTRO

Recently recommended by VOGUE for its "tasty but hearty dishes." Open daily 10am-3pm.



Photo: Cattie Cleveland

JOIN US FOR ART IN ACTION

Fridays in July and August • 11am-2pm
Drop in for FREE, hands on art projects

COMMUNITY PROGRAMS

Visit our website for information on artist talks, hands-on art activities, workshops, films, and more.

MUSEUM HOURS: Open Daily, 10am – 6pm

FREE ADMISSION: Thanks to our Members and Donors

www.biartmuseum.org

550 Winslow Way E • Bainbridge Island, WA 98110
206.842.4451

2017 Exhibitions sponsored by:



laidnorton
WEALTH MANAGEMENT



CITY OF
BAINBRIDGE ISLAND



KITSAP
COMMUNITY
FOUNDATION



BAINBRIDGE
Community Foundation

AMES FAMILY
FOUNDATION
Cultural Diversity Series

Leslie & Michael Lebeau

WASHINGTON STATE

SUMMER 2017

PublicWorks

THE OFFICIAL PUBLICATION OF WASHINGTON PUBLIC WORKS PROFESSIONALS



The PROJECT OF THE YEAR *Awards*

Inside: Spring Conference Recap | Transforming Our Vulnerable Water Infrastructure | Smart Pavement Markers



The organization of choice in providing public works education, advocacy, expertise, and public awareness for its diverse community of members.

2601 Fourth Avenue, Suite 800, Seattle, WA 98121-1280

The PROJECT OF THE YEAR Awards

Structures – \$5-\$25 Million

BUCKLIN HILL BRIDGE AND ESTUARY ENHANCEMENT

Agency: Kitsap County Contractor: Granite Construction Consultant: Exeltech Consulting, Inc.

Overview: Initiated by Kitsap County in 2011, the Bucklin Hill Bridge and Estuary Enhancement was designed to enhance the estuary of Clear Creek as it enters Dyes Inlet and reduce traffic congestion in Silverdale. The project embraced community values, considered transportation needs, protected and enhanced environmental resources, and recognized residents, business owners, and Suquamish tribal members who live, work, and play in the area. And while the closure of a road that routinely carries 20,000 vehicles a day sounds unreasonable, it saved the project \$2M and allowed contractors to work several tracks of construction concurrently and safely along the shores of the fragile Clear Creek and Dyes Inlet water ways.

The design team, led by Otak, Inc., worked with Kitsap County to successfully replace the roadway embankment and two 72-inch culverts with a 240-foot three-span bridge; widening the road to five lanes, and adding traffic signals, roadway and pedestrian lighting, storm drainage improvements; and adding amenities for pedestrians and bicyclists. The grade of the road was raised five feet to provide clearance under the new bridge and to better fit the adjacent properties and roadway connections.

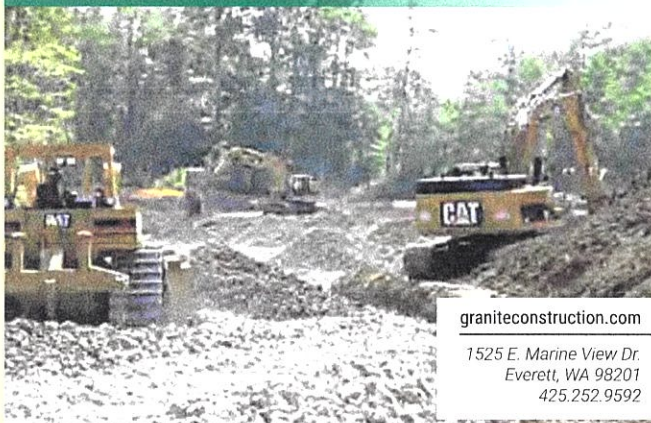
The Bucklin Hill Bridge project is the largest roads project in the County's history and Kitsap County committed to innovation and an unprecedented level of public outreach even before breaking ground. Starting two years before project kick-off, they communicated regularly through meetings and the website BucklinHill.com. This resulted in a positive community support on a controversial road closure could have easily turned the public against the project. And through the innovation of contractors Exeltech Consulting, Inc. and Granite Construction the project was able to navigate the complex permitting process and make complete, onsite engineering changes on site that resulted in \$300k in savings, as well as reducing impact on the estuary.

"The ecology and economy of the project was huge to Silverdale as a regional center. Our ability to move people, goods and services around our community and the ability to take out this choke point in our infrastructure is extremely important."

– Robert Gelder, Kitsap County Commissioner



GRANITE



graniteconstruction.com

1525 E. Marine View Dr.
Everett, WA 98201
425.252.9592

